



INSTRUCTION BULLETIN

No. 340781
Machine: 800
Published: 12-2017
Rev. 01

NOTE: DO NOT DISCARD the Parts List from the Instruction Bulletin. Place the Parts List in the appropriate place in the machine manual for future reference. Retaining the Parts List will make it easier to reorder individual parts and will save the cost of ordering an entire kit.

NOTE: Numbers in parenthesis () are reference numbers for parts listed in Bill of Materials.

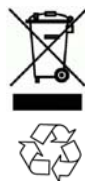
Installation instructions for **kit number 9012866**

SYNOPSIS:

This kit contains the parts needed to install a cab kit on 800 machines.
Please follow step-by-step instructions.

SPECIAL TOOLS / CONSIDERATIONS: OVERHEAD TROLLEY CRANE OR HOIST - CAUTION; DO NOT ATTEMPT TO INSTALL CAB WITHOUT AN OVERHEAD MOTORIZED TROLLY CRANE OR HOIST.

(Estimated time to complete: 5 hours)



PROTECT THE ENVIRONMENT

Please dispose of packaging materials, used machine components such as batteries and fluids in an environmentally safe way according to local waste disposal regulations.

Always remember to recycle.

PREPARATION:

1. Park the machine on a clean level surface, turn off the machine, remove the key, and set the parking brake.

FOR SAFETY: Before leaving or servicing machine, stop on level surface, turn off machine, and remove key.

2. Disconnect the battery cables from the battery.



WARNING: Always disconnect battery cables from machine before working on electrical components.

3. Remove the existing fuel inlet panel from the machine. Discard the panel and hardware.

INSTALLATION:

NOTE: Do not damage wire/cable connections or controls/components when removing panels from the operator compartment.

1. Remove the hardware holding the circuit breaker panel, brush control panel, access panel, air conditioning panel, and dash panel to the machine. Set all hardware aside. (Fig. 1)
2. Install the 76 in. adhesive foam seal (46) onto the air conditioning panel and reinstall the panel onto the machine. (Fig. 1)
3. Install the 84 in. adhesive foam seal (45) onto the dash panel and reinstall the panel onto the machine. (Fig. 1)
4. Install the 54 in. adhesive foam seal (43) onto the access panel and reinstall the panel onto the machine. (Fig. 1)
5. Install the 34 in. adhesive foam seal (44) onto the brush control panel and reinstall the panel onto the machine. (Fig. 1)

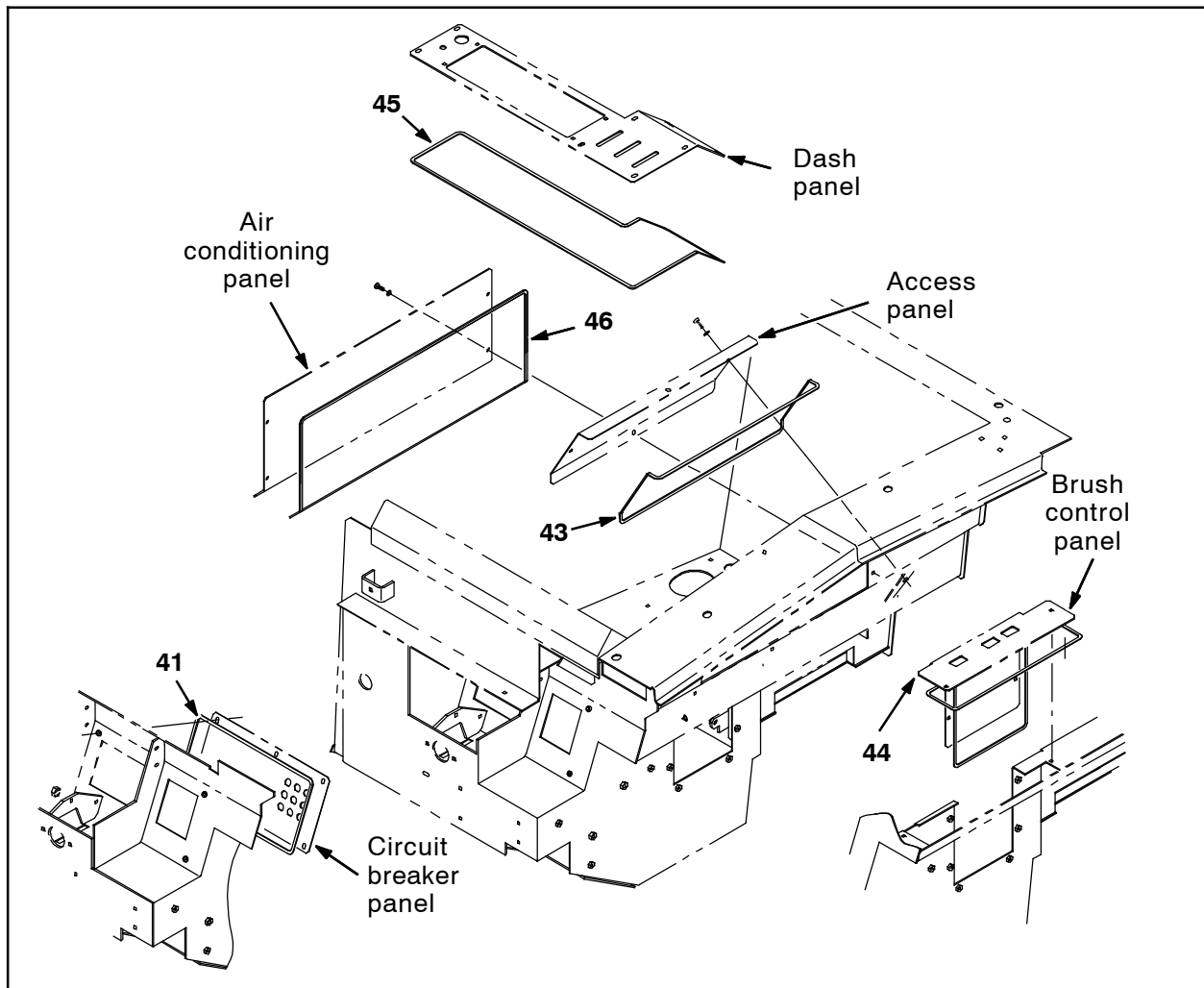


FIG. 1

6. Install the 42 in. adhesive foam seal (41) onto the circuit breaker panel and reinstall the panel onto the machine. (Fig. 1)
7. Use two hex screws (19) and two flat washers (10) to install the side brush mirror bracket (40) onto the cab (1). (Fig. 2)
8. Use a nut (38), lock washer (39), and flat washer (37) to install the mirror (36) onto the side brush mirror bracket (40). (Fig. 2)
9. Use isopropyl alcohol to clean areas where the urethane seals (21), (22), and (23) will be installed. (Fig. 3)
10. Measure the areas on the cab where the urethane seals (22) and (23) will be installed. (Fig. 3)
11. Cut the urethane seals (22) and (23) to the appropriate lengths from the measurements taken in the previous step. (Fig. 3)

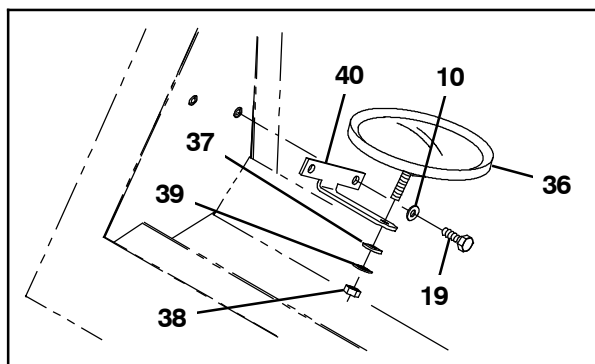


FIG. 2

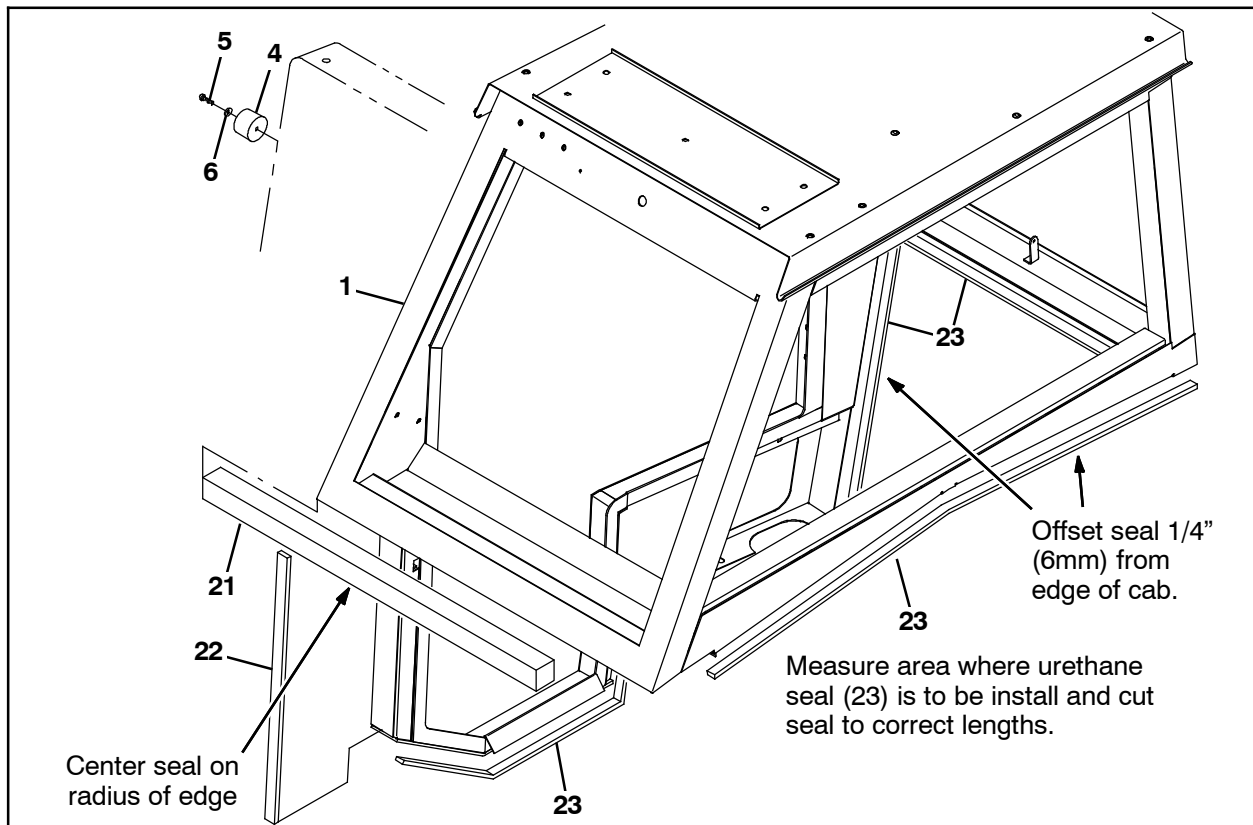


FIG. 3

12. Install the urethane seals (21), (22), and (23) onto the cab (1). (Fig. 3)

13. Use a hoist or crane to lift the cab (1) onto the machine and use four socket screws (7) and four washers (8) to secure the cab onto the machine.

CAUTION; DO NOT ATTEMPT TO INSTALL CAB WITHOUT AN OVERHEAD MOTORIZED TROLLEY CRANE OR HOIST.

14. Remove the four eye bolts from the corners on top of the cab. (Fig. 4)



FIG. 4

15. Fill the four holes where the eye bolts were previously located with silicone sealant. (Fig. 4)

16. Install a M10 hex screw (47) and flat washer (30) into each hole filled with silicone sealant in the previous step. (Fig. 4)

17. Install the circuit breaker (2) and boot (3) into the circuit breaker plate. (Fig. 5)

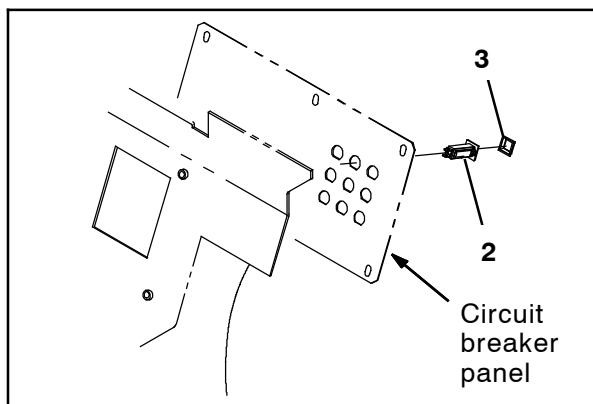


FIG. 5

18. Connect the main wire harness to the circuit breaker (2). (Fig. 6 / Fig. 7 / Fig. 8)

19. Reinstall the circuit breaker panel onto the machine. (Fig. 2)

20. Connect the main wire harness to the windshield wiper assembly and the dome light. (Fig. 6 / Fig. 7 / Fig. 8)

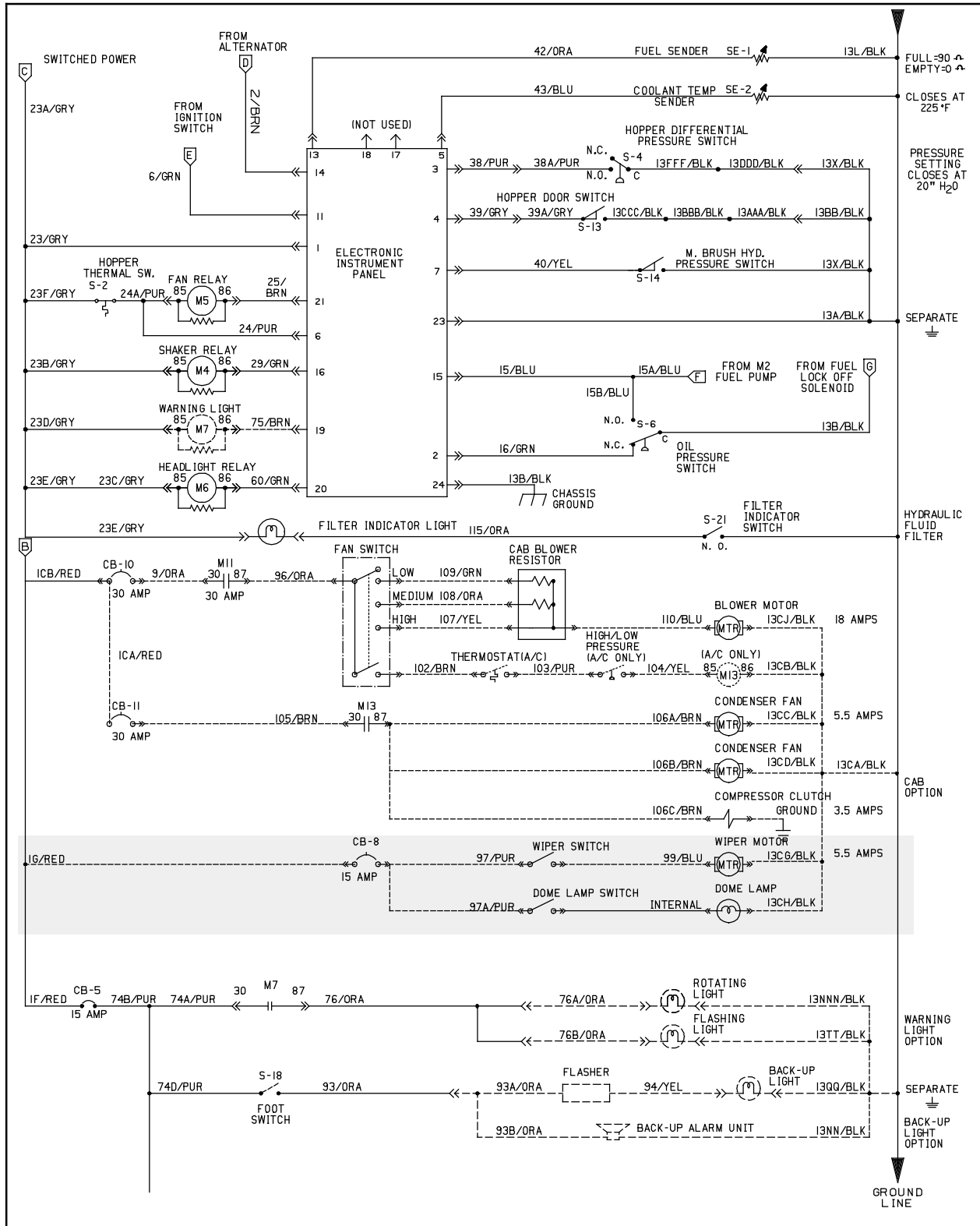


FIG. 6 - Diesel 4i Machines Only

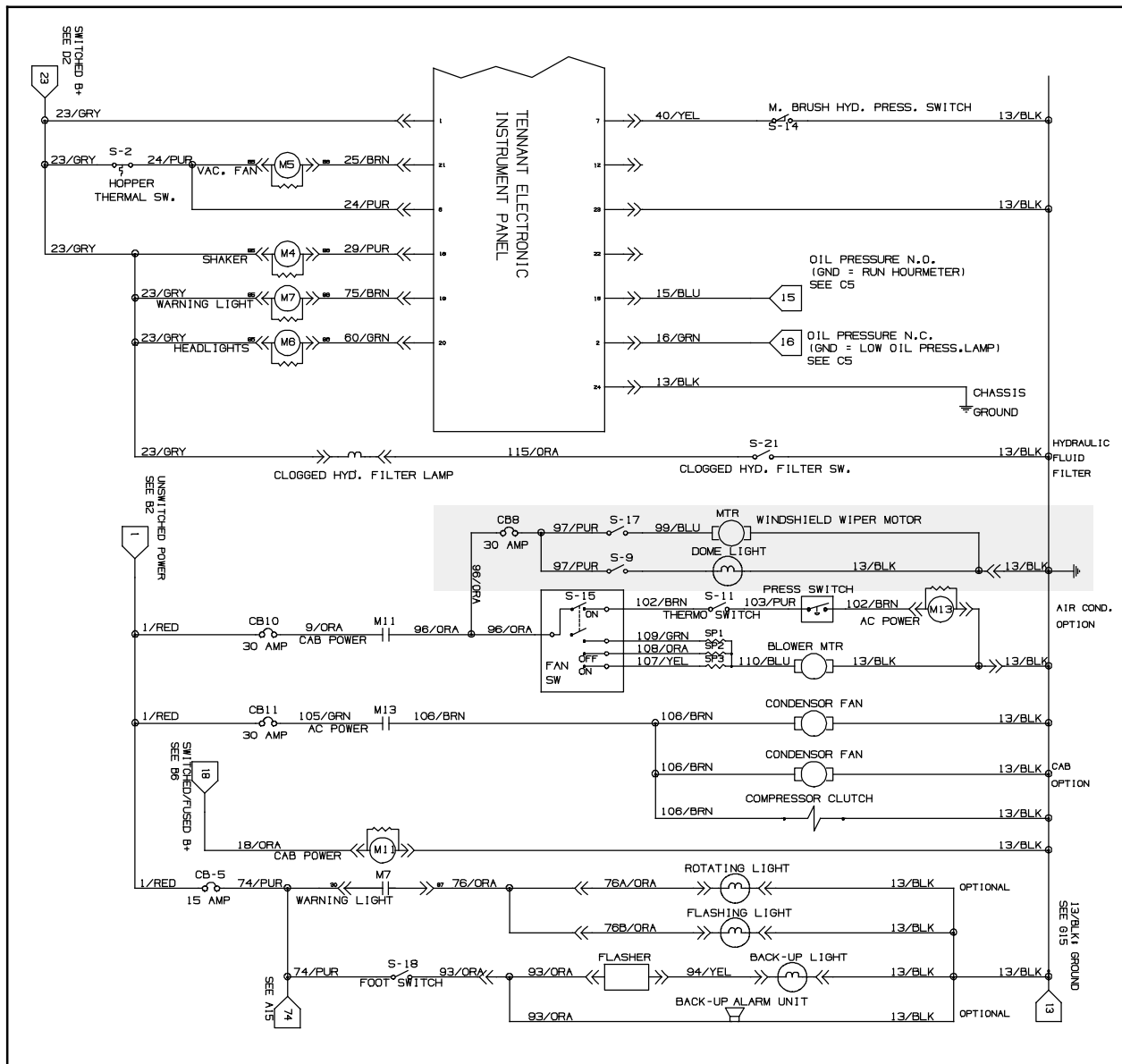


FIG. 7 - Diesel 4f Machines Only



21. **LPG Machines Only:** Use two hex nuts (11) to install the fuel inlet plate (42) and fuel inlet cover (32) onto the operator compartment. (Fig. 13)

22. **Gas / Diesel Machines Only:** Install the urethane seal (20) onto the fuel inlet cover (18). (Fig. 9)

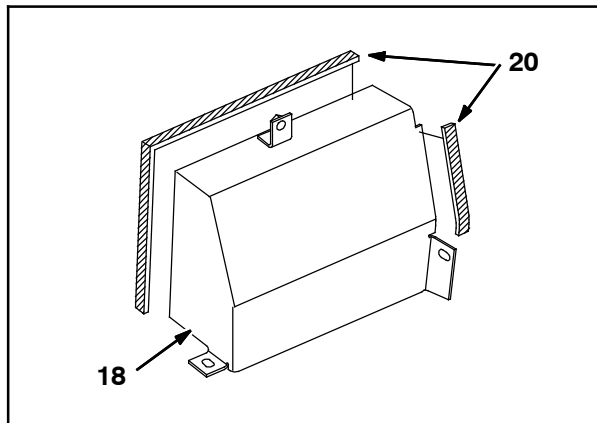


FIG. 9

23. **Gas / Diesel Machines Only:** Use two hex screws and two Belleville washers to install the fuel inlet cover (18) onto the operator compartment. (Fig. 9)

24. Install acoustic insulation.

25. Drill a hole into the operator compartment. (Fig. 10 / Fig. 15)

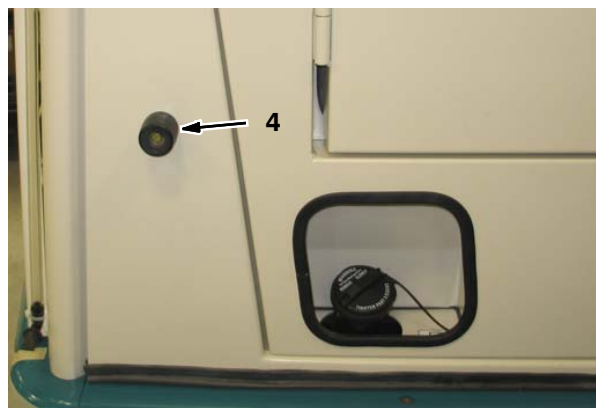


FIG. 10

26. Use a pan screw (5) and washer (6) to install the rubber bumper (4) onto the operator compartment. (Fig. 10 / Fig. 15)

27. Place the floor mat (12) onto the floor of the operator compartment and secure the mat with a rivet (14) and flat washer (13). (Fig. 11 / Fig. 12)

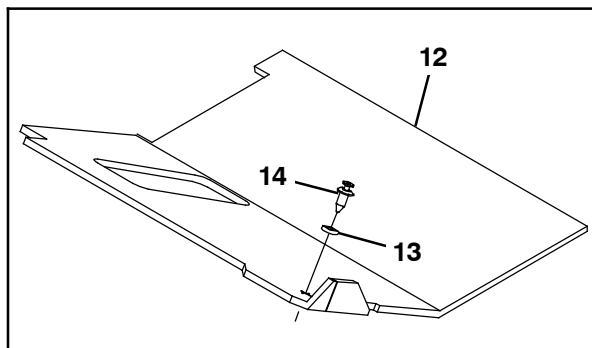


FIG. 11



FIG. 12

28. Install the acoustic insulation (15) and (16) into the operator compartment. (Fig. 12)

29. Remove the armrest from the seat and install it onto the door. (Fig. 13)



FIG. 13

30. Use a hex screw (29), a tube (28), two flange bushings (27), two flat washers (30), and a flange hex nut (31) to install the mirror guard (25) onto the mirror bracket (26). Do not completely tighten hardware. These items are tightened during later adjustment. (Fig. 14)
31. Use a hex screw (34), three flat washers (8), two nylon washers (9) and a hex nut (35) to install the gas spring (33) onto the mirror guard (25). Do not completely tighten hardware. These items are tightened during later adjustment. (Fig. 14)
32. Use a hex screw (34), two flat washers (8), two nylon washers (9) and a hex nut (35) to install the gas spring (33) onto the mirror bracket (26). Do not completely tighten hardware. These items are tightened during later adjustment. (Fig. 14)
33. Use the hardware included with the mirror (24) to install the mirror onto the mirror guard (25). (Fig. 14)
34. Use three hex screws (19) and three flat washers (10) to install the entire mirror assembly assembled in the previous steps onto the machine. (Fig. 14)
35. Adjust the mirror (24) and tighten mirror hardware. (Fig. 14)
36. Reconnect the battery cables to the battery.
37. Start and test machine. Ensure the dome light and windshield wiper function.

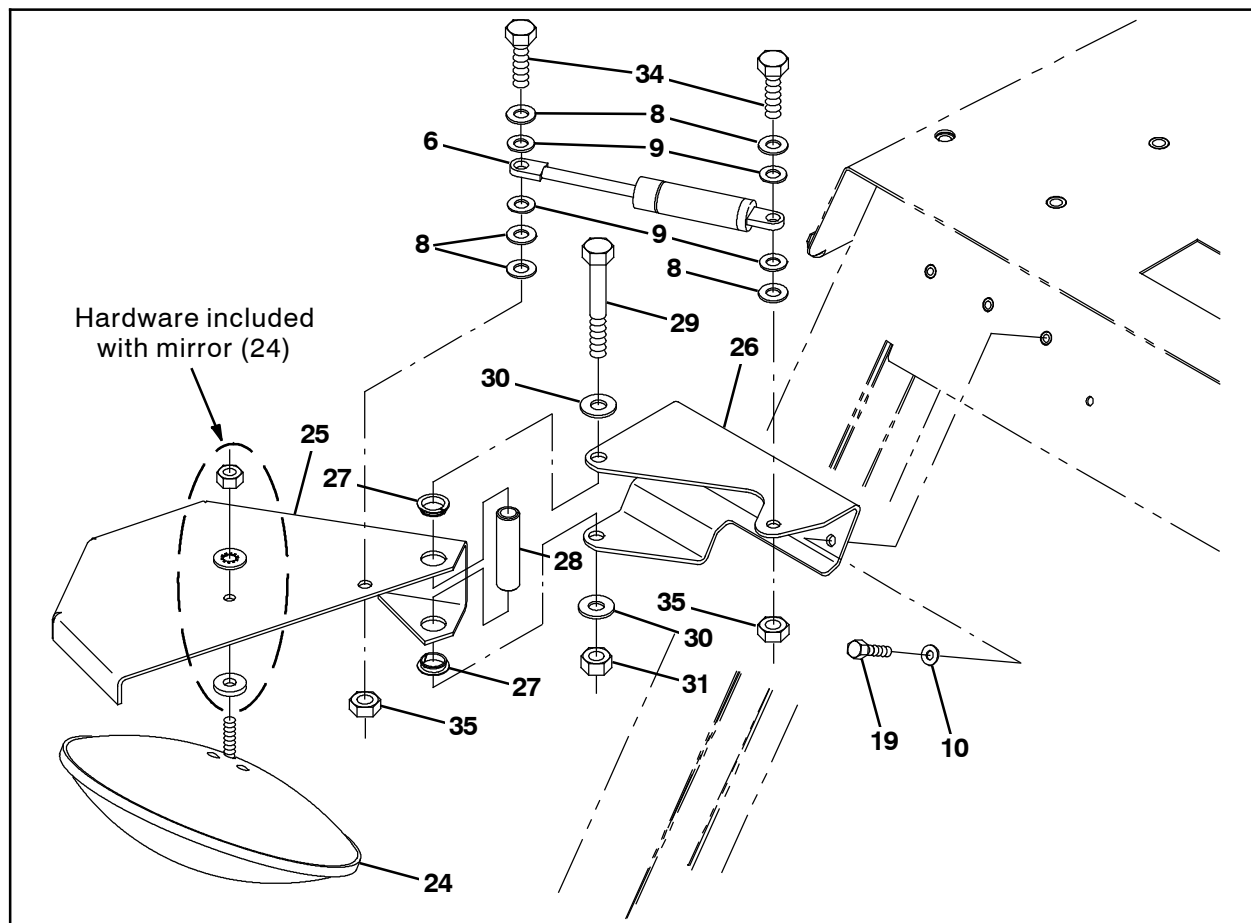


FIG. 14

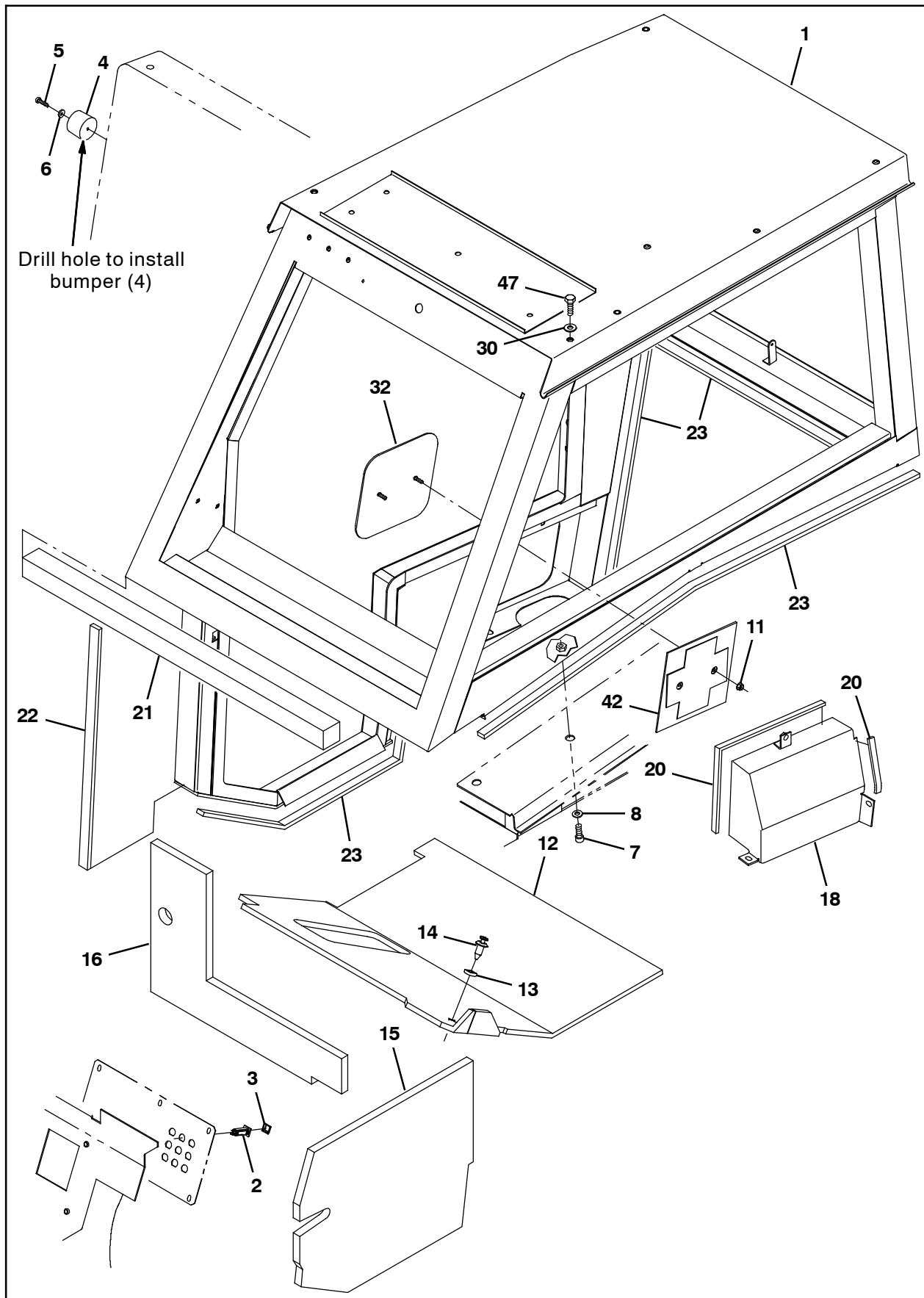


FIG. 15

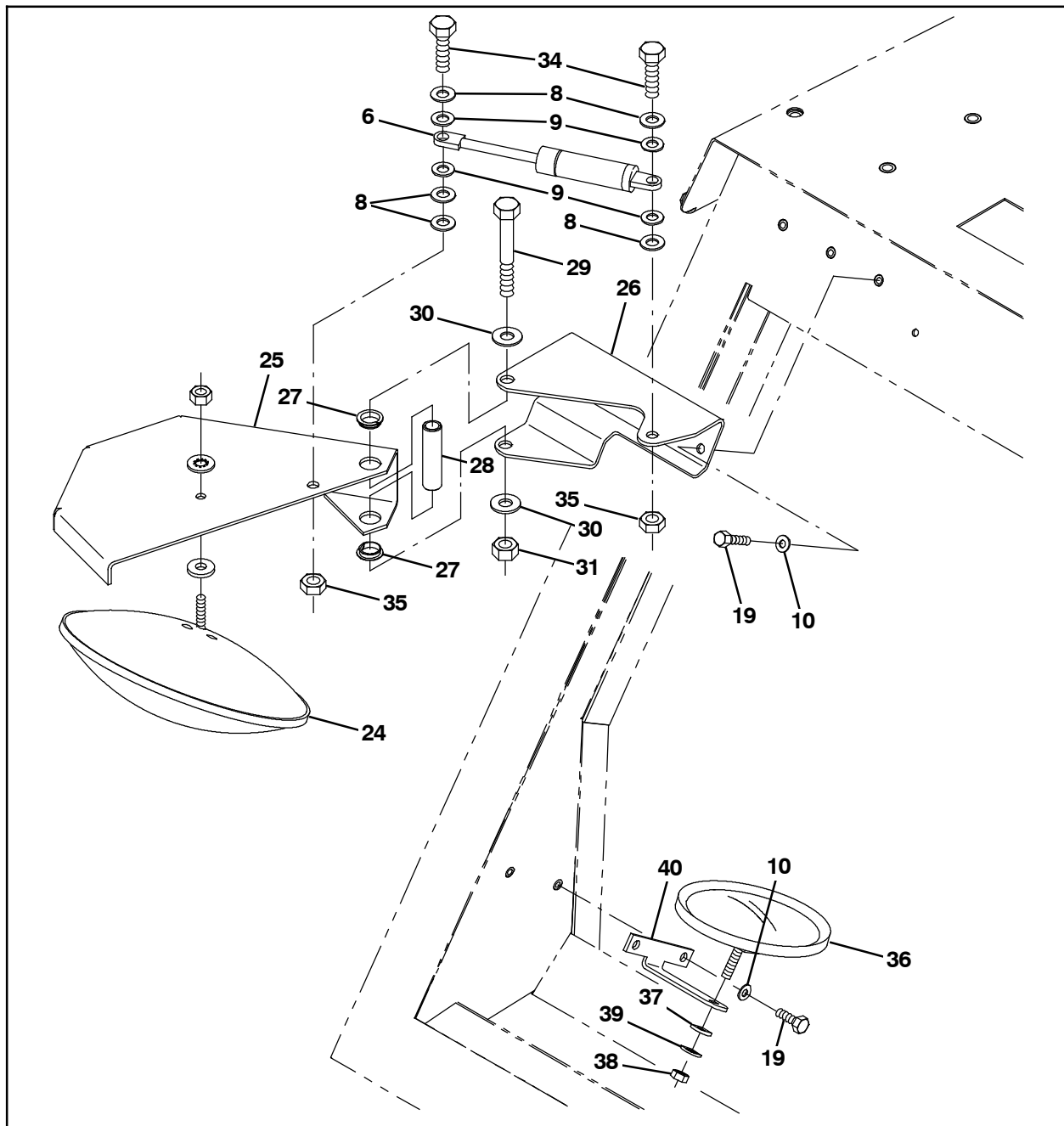


FIG. 16

Bill of Materials for Cab Kit, Gas/LPG/Dsl, CI [800L] - 380601

Ref.	Tennant Part No.	Description	Qty.
▽	9012866	Cab Kit, Gas/Lpg/Dsl, Ci [800l Gray]	1
▲ 1	9012887	Cab Assy, Oprtr, [800 Gray]	1
▲ 2	1064188	Circuitbreaker, 15.0A, Resettable	1
▲ 3	1064191	Boot, Circuit Breaker	1
▲ 4	44851	Bumper, Rbr, 1.5D 1.50TH 0.28H	1
▲ 5	09258	Screw, Pan, PHL, M6 X 1.00 X 40, 4.8	1
▲ 6	32980	Washer, Lock, Int, 10	1
▲ 7	39309	Screw, Soc, M10 X 1.50 X 25, 12.9	4
▲ 8	32485	Washer, Flat, 0.38, SAE	9
▲ 9	43611	Washer, Flat, 0.39b 0.75d .06, Nyl	4

	Ref.	Tennant Part No.	Description	Qty.
▲	10	19066	Washer, Flat, 0.25b 0.56d .05, Pl, 10	5
▲	11	07790	Nut, Hex, Flng, M6 X 1.00	2
▲	12	76522	Pad, Rbr, Floormat, .44 23.5W 27.0L	1
▲	13	41178	Washer, Flat, 0.25, Fendr	1
▲	14	21246	Rivet, Plstc, .325D X 0.79	1
▲	15	77652	Insulation, Acstc, 0.8, 20.0 X 15.9 Cham	1
▲	16	76516	Insulation, Acstc, 0.8, 21.9 X 14.9 NTCH	1
▲	17	41345	Screw, Hex, M12 X 1.75 X 25, 8.8	2
▲	18	1073870	Cover Wldt, Fuel Inlet [800 Gray]	1
▲	19	06942	Screw, Hex, M6 X 1.00 X 16, 8.8	5
▲	20	79011	Seal, Ure, 0.25, 0.50W 41.0L	1
▲	21	1068383	Seal, Foam, 2.00 2.00w 37.0l, Adh	1
▲	22	1015184	Seal, Afmkt, Ure, Adh, 0.50, 1.00w 03ft (Cut to length)	4
▲	23	1015182	Seal, Afmkt, Ure, Adh, 0.50, 1.00w 08ft (Cut to length)	1
▲	24	68445	Mirror, Convex, 08.0D	1
▲	25	1073925	Guard, Mirror [Gray]	1
▲	26	1073932	Bracket, Mtg, Mirror [800 Gray]	1
▲	27	41434	Bushing, Flng, 0.62B 0.68D 0.00L, Nyl	2
▲	28	70761	Tube, 0.44ID 0.620D 02.4L, Stl	1
▲	29	03193	Screw, Hex, M10 X 1.50 X 90, 8.8	1
▲	30	32492	Washer, Flat, 0.38, Std	6
▲	31	41430	Nut, Hex, Lock, M10 X 1.5, NI	1
▲	32	1073873	Cover, Cab, Lpg [800 Gray]	1
▲	33	12549	Gas Spring, 80LB, 2.0Strk	1
▲	34	21197	Screw, Hex, .38- 16 X 1.00, G5	2
▲	35	36643	Nut, Hex, Lock, 38- 16, NL, Thin	2
▲	36	1050295	Mirror, Convex, 5.00 D, Rnd	1
▲	37	01685	Washer, Flat, 0.38B 0.88D .08, SS	1
▲	38	01691	Nut, Hex, Std, .38- 18, SS	1
▲	39	43952	Washer, Lock, Int, 0.31, SS	1
▲	40	1073867	Bracket, Mtg, Mirror, Rearview[800 Gray]	1
▲	41	1021969	Seal, Foam, 0.06 0.25W 42.0L, Adh	1
▲	42	70785	Plate Wldt, Inlet, Fuel	1
▲	43	1021937	Seal, Foam, 0.06 0.25W 54.0L, Adh	1
▲	44	1021951	Seal, Foam, 0.06 0.25W 34.0L, Adh	1
▲	45	1021968	Seal, Foam, 0.06 0.25W 84.0L, Adh	1
▲	46	1021966	Seal, Foam, 0.06 0.25W 76.0L, Adh	1
▲	47	06961	Screw, Hex, M10 X 1.5 X 20, 8.8	4

TENNANT COMPANY
P. O. Box 1452
Minneapolis, MN 55440-1452